

1/8 SCALE MODEL

MASCHINENMENSCH

PLASTIC MODEL KIT



1/8 SCALE MODEL

METROPOLIS

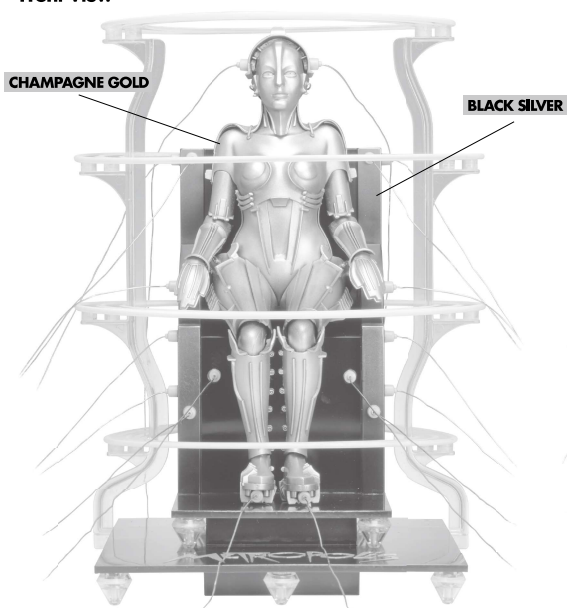
MASCHINENMENSCH

PLASTIC MODEL KIT

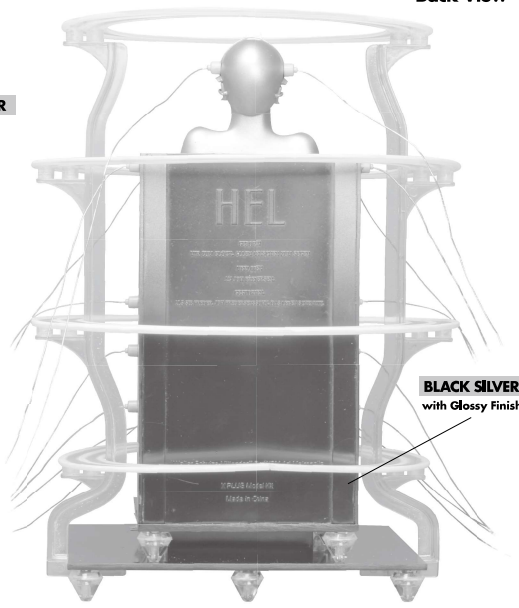


KIT NO.
411-200234TP

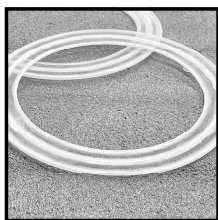
Front View



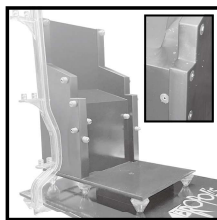
Back View



PRO TIP!



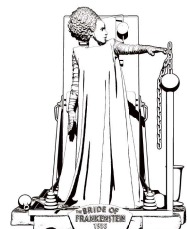
Lightly spray white paint on the raised parts of the rings for a better ambience. You can also achieve a nice atmosphere by mixing in a few percent of phosphorescent paint.



For attaching the plugs, if you are painting the chair first, it's recommended to apply a 5mm diameter masking at the attachment points on the chair. This ensures a secure attachment and results in a cleaner finish.

YOU'VE GOTTA KEEP AN EYE OUT FOR THESE KITS TOO!

THE BRIDE OF FRANKENSTEIN



© Universal City Studios LLC. All Rights Reserved.

RED SONJA



RED SONJA © & 2023 and related logos, characters, stories, names, and distinctive likenesses thereof are owned by Red Sonja LLC.

FOR MORE TUTORIALS AND FUN STUFF VISIT www.xplusmodelkit.com



SURVEY!



IMPORTANT - READ THIS FIRST!

- This model needs to be assembled. Please read the instructions carefully before assembling the model.
- After taking the product out of the plastic bag, please tear the plastic bag and dispose of it somewhere safe as there is a danger of suffocation if young children mishandle it.
- Cleanly clip the parts from the trees and discard the trees after all parts have been removed.
- Due to the way this product is manufactured, there will always be a possibility of there being sharp points that may cause harm. Be sure not to play with or mishandle the trees or use them for anything than their intended use. Households with young children should be particularly careful.
- Use nippers for removing parts and smooth over any burrs remaining on parts with a craft knife or file. Be careful when using nippers, craft knives or files as you may cut your hands or fingers. Children under 10 years old should have the work carried out by a parent or guardian.
- This kit contains small parts which can be a choking hazard so please keep them out of reach of younger children. Under no circumstances should a child younger than the target age be left unsupervised as there is a risk of swallowing these parts.
- If you are using plastic cement or paint, pay extra attention to the following points: If the cement or paint gets in your eyes, immediately wash the affected area with plenty of water and consult a doctor. Do not use cement or paint in an enclosed area as there is a danger of inhaling toxic fumes. Under no circumstances should you use cement or paint near an open flame as there is a risk of fire.
- Do not leave this product in areas subject to direct sunlight, high temperatures or high humidity.

CONTACT US

ADDRESS: 9F, Hiranomachi Takahashi Bldg., Hiranomachi 1-8-8, Chuo Ward, Osaka City, Osaka, Japan 541-0046

EMAIL: info@ric-toy.com

*We are available on non-holiday weekdays from 10:00 to 18:00 (JST)

2023
X PLUS CO., LTD.

MADE IN CHINA

Walter Schütze-Mittendorf © - WSM Art Metropolis
3D sculpt by: Nils Wadensten
Box art by: Travis Carter

BEFORE WE GET STARTED

Note that the product includes parts on the sprues that won't be used to assemble this model.

IMPORTANT!

PLEASE TEST FIT PARTS BEFORE GLUING TO ENSURE PROPER FIT.

Step 1 - Assemble body halves #51 and #52.

Step 2 - Assemble hands #55/#56 and #53/#54.

Step 3 - Clamp hand assemblies into wrist halves (#11L/#12L) on left arm, and (#11R/#12R) on right arm of the assembled body.

Step 4 - Attach upper arm halves #9L/#10L and #9R/#10R to assembled body.

Step 5 - Attach front torso #6, then rear torso #5 to assembled body.

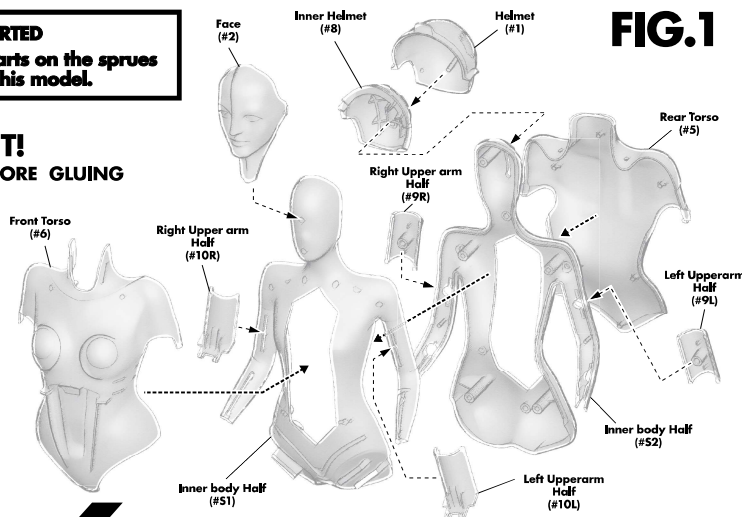
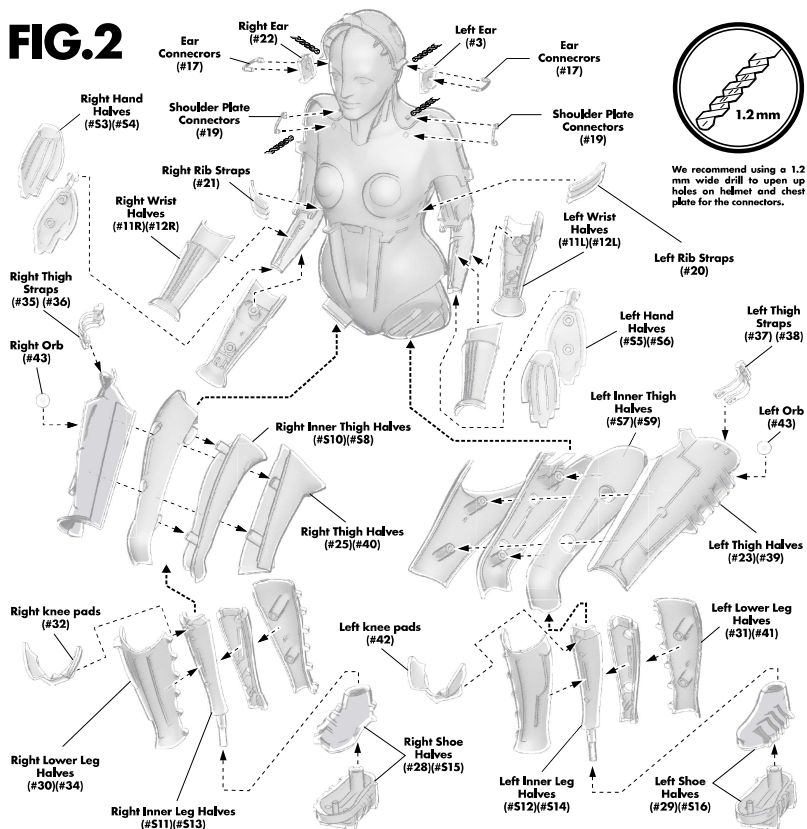


FIG.1

FIG.2



Step 6 - Assemble helmet #1 and #8, then attach to rear of assembled body.

Step 7 - Attach face #2 to front of assembled body.

Step 8 - Assemble left inner thigh parts #57/#59 and attach left inner leg parts #512/#514.

Step 9 - Place knee pads #32 into right inner leg half #511 then push into right lower leg half #30. Attach right inner leg half #513 then place right lower leg half #34 over assembly.

Step 10 - Place knee pads #42 into left inner leg half #512 then push into left lower leg half #31. Attach left inner leg half #514 then place left lower leg half #41 over assembly.

Step 11 - Attach the right thigh halves #25/#40 to the assembled right inner thigh, and the left thigh halves #23/#39 to the assembled left inner thigh.

Step 12 - At this point it is best to place orbs #43 on the right and left thighs.

Step 13 - Assemble shoes #28/#515 (right shoe) and #29/#516 (left shoe).

Step 14 - Cement assembled shoes onto legs to complete basic body assembly.

Step 15 - Attach right (#22) and left (#3) ears.

Step 16 - Drill the holes wider on #1, #22, #3, #5 and #6 to open enough room for the connectors to fit.

Step 17 - Test fit ear connectors #17 before cementing! When fit is correct, cement in place.

Step 18 - Test fit shoulder plate connectors #19 before cementing! When fit is correct, cement in place.

Step 19 - Cement left (#20) and right (#21) rib straps into place.

Step 20 - Cement right thigh straps #35/#36 into place. Note, the strap tops are not cemented onto torso.

Step 21 - Cement left thigh straps #37/#38 into place. Note, the strap tops are not cemented onto torso.

FIG.3

Step 22 - Assemble x14 pieces of latform legs #48/#49.
Step 23 - Cement x8 of the assembled legs on lower platform #47, cement remaining x6 to upper platform #27.

Step 24 - Cement assembled upper platform to lower platform after all legs are in place.
Step 25 - Cement chair front and back #51/#52 together.

Step 26 (Optional) - Insert the two pins #518 in the upper platform #27 to cover the holes.

NOTE: In the following step, don't glue the rings before completing the model!

Step 27 (Optional) - Attach one of the ring supports #521 under the #47. Place a small ring #20 to the most bottom socket, and attach the other ring support #521 to the opposite side of the #47. Attach the other side of the small ring to the other ring support to fix their position.

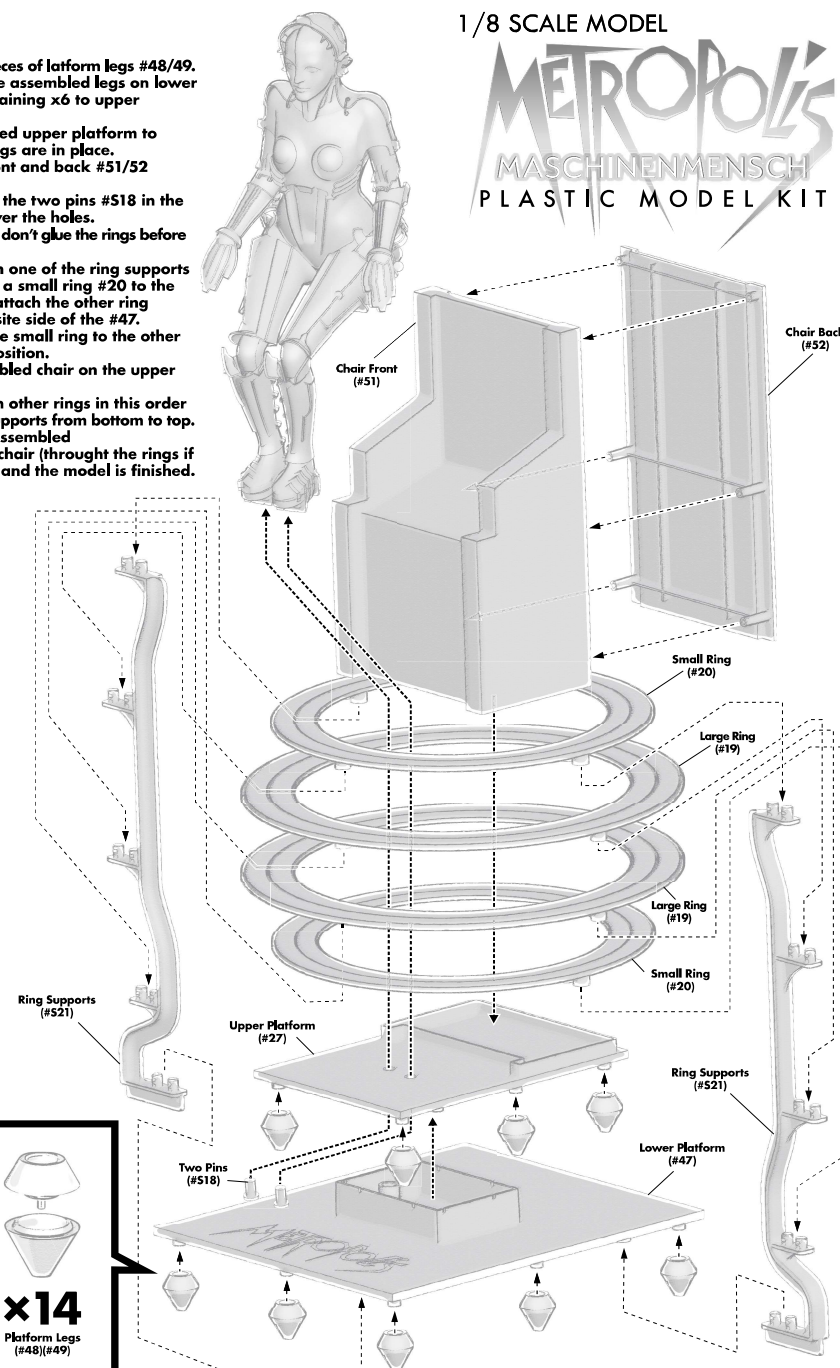
Step 28 - Insert the assembled chair on the upper platform #27.

Step 29 (Optional) - Attach other rings in this order #19, #19, #20 to the ring supports from bottom to top.

Step 30 - Now place the assembled Maschinenmensch on the chair (through the rings if you have them attached), and the model is finished.

1/8 SCALE MODEL

METROPOLIS
MASCHINENMENSCH
PLASTIC MODEL KIT



1/8 SCALE MODEL

METROPOLIS
MASCHINENMENSCH
PLASTIC MODEL KIT

OPTIONAL ASSEMBLY

X-PLUS
MODEL KIT

Step 31 (Optional) - Place the 18 plugs on the model as instructed.

NOTE!

Make sure you do these steps before you glue every part and finish the model.

FIG.1

Step 1
Attach 18 plugs #S17 to the chair, helmet and shoes as displayed. There are total of 20 plugs with 2 of them as spare parts.

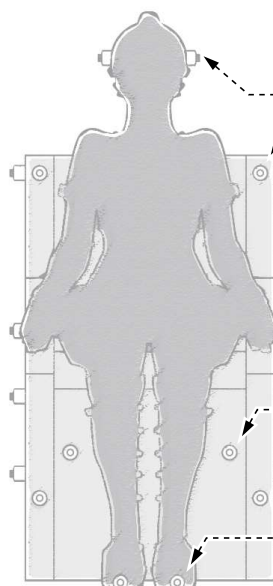
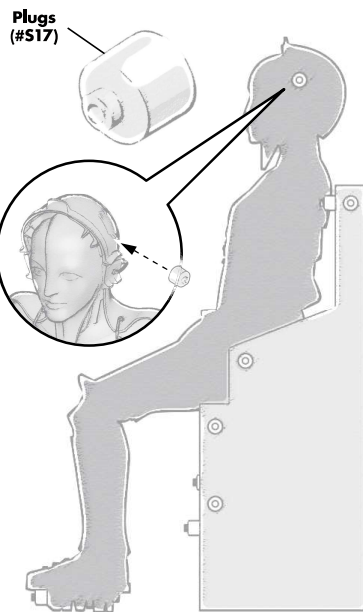
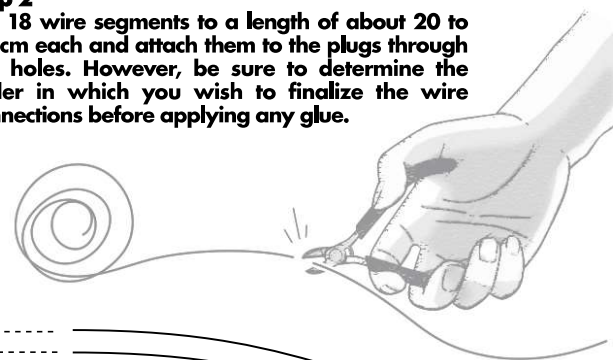


FIG.2

Step 2
Cut 18 wire segments to a length of about 20 to 30 cm each and attach them to the plugs through the holes. However, be sure to determine the order in which you wish to finalize the wire connections before applying any glue.



PRO TIP !
Pack some putty in the back of each plug before gluing them in place.