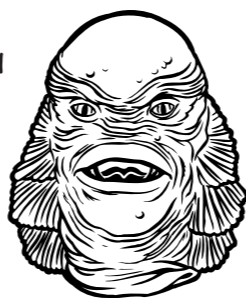


1/8 SCALE MODEL

# REVENGE OF THE CREATURE

PLASTIC MODEL KIT

DON'T BE AFRAID TO MAKE A SPLASH WITH YOUR PAINTING SKILLS...



1/8 SCALE MODEL

# REVENGE OF THE CREATURE

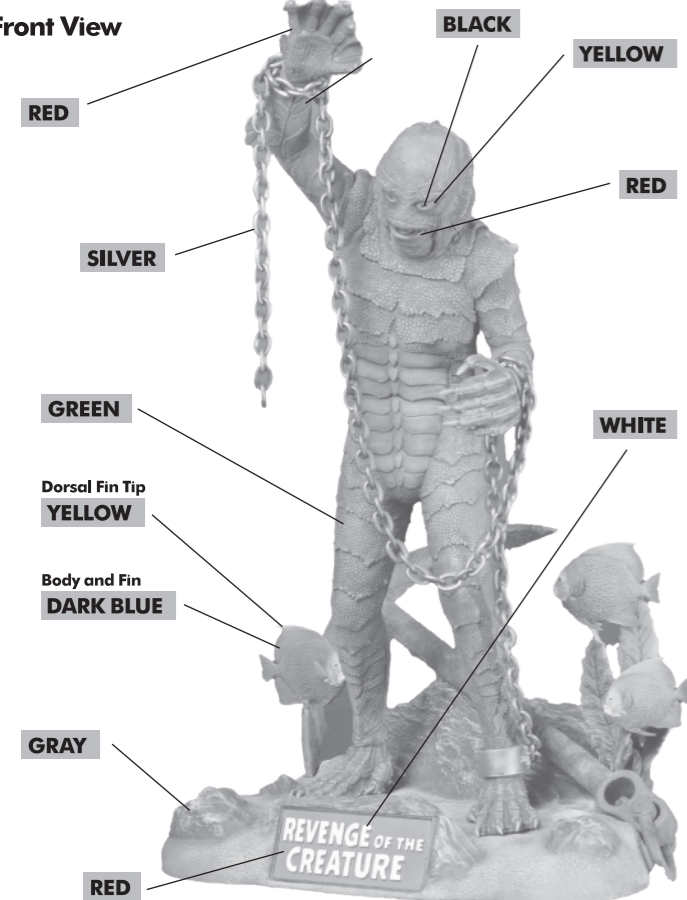
PLASTIC MODEL KIT

X-PLUS  
MODEL KIT

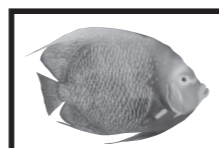
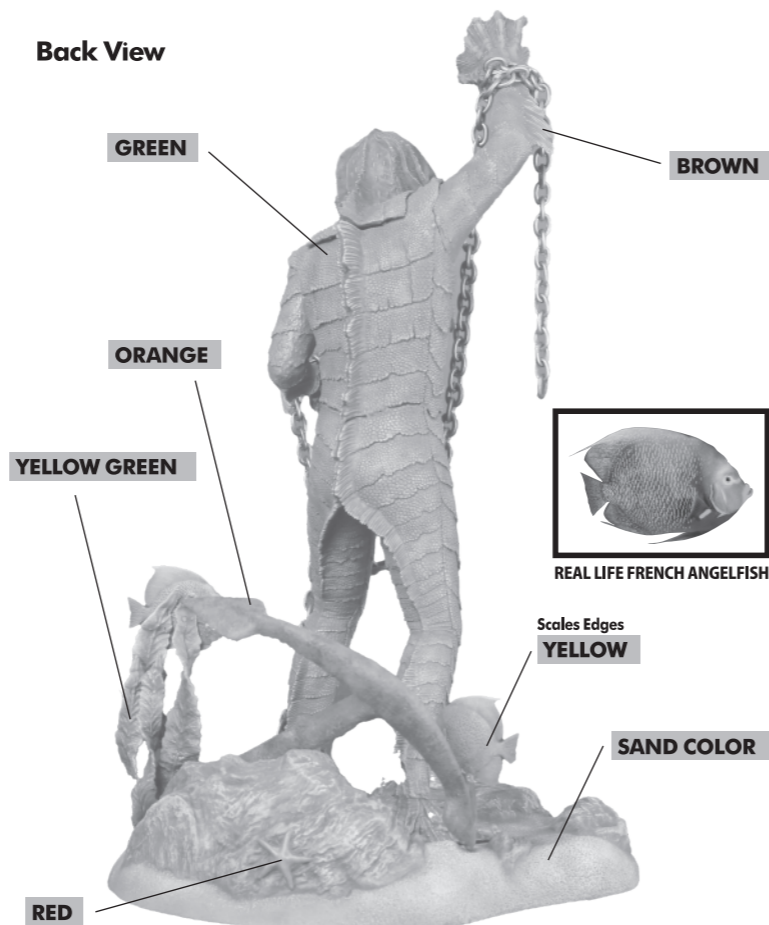
KIT NO.  
411-200077T

## IMPORTANT – READ THIS FIRST!

Front View



Back View



REAL LIFE FRENCH ANGEFISH

• This model needs to be assembled. Please read the instructions carefully before assembling the model.

• After taking the product out of the plastic bag, please tear the plastic bag and dispose of it somewhere safe as there is a danger of suffocation if young children mishandle it.

• Cleanly clip the parts from the trees and discard the trees after all parts have been removed.

• Due to the way this product is manufactured, there will always be a possibility of there being sharp points that may cause harm. Be sure not to play with or mishandle the trees or use them for anything than their intended use. Households with young children should be particularly careful.

• Use nippers for removing parts and smooth over any burrs remaining on parts with a craft knife or file. Be careful when using nippers, craft knives or files as you may cut your hands or fingers. Children under 10 years old should have the work carried out by a parent or guardian.

• This kit contains small parts which can be a choking hazard so please keep them out of reach of younger children. Under no circumstances should a child younger than the target age be left unsupervised as there is a risk of swallowing these parts.

• If you are using plastic cement or paint, pay extra attention to the following points: If the cement or paint gets in your eyes, immediately wash the affected area with plenty of water and consult a doctor. Do not use cement or paint in an enclosed area as there is a danger of inhaling toxic fumes. Under no circumstances should you use cement or paint near an open flame as there is a risk of fire.

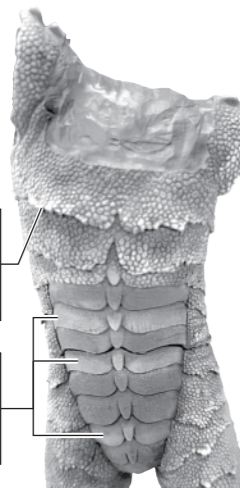
• Do not leave this product in areas subject to direct sunlight, high temperatures or high humidity.

## PRO TIP!

The 1955 *Revenge of the Creature* movie is basically shot in black and white. So, the black and white tones should be applied carefully. However, if you wish to use a color finish, please refer to the following tips.

Paint the edges of the scales on the chest with gold dry brush or color pencil for a realistic finish.

Lighten the 2nd, 4th, and 7th rows from the top to create a sense of liveliness and movement.



FOR MORE TUTORIALS AND FUN STUFF VISIT [www.xplusmodelkit.com](http://www.xplusmodelkit.com)



LET US KNOW MORE IN THIS SURVEY

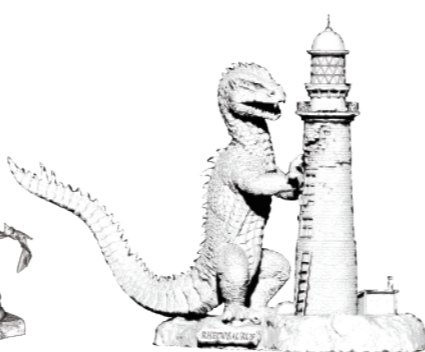


## YOU'VE GOTTA KEEP AN EYE OUT FOR THESE KITS TOO!

DRACULA



RAY HARRYHAUSEN'S RHEDOSAURUS



© Universal City Studios LLC. All Rights Reserved. Bela Lugosi™ © 2023 LUGOSI LLC

Produced with the permission of The Ray and Diana Harryhausen Foundation (Charity Number 50001419).

## CONTACT US

ADDRESS: 9F, Hiranomachi Takahashi Bldg., Hiranomachi 1-8-8, Chuo Ward, Osaka City, Osaka, Japan 541-0046

EMAIL: [info@ric-toy.com](mailto:info@ric-toy.com)

\*We are available on non-holiday weekdays from 10:00 to 18:00 (JST)

2023  
X PLUS CO., LTD.

MADE IN CHINA

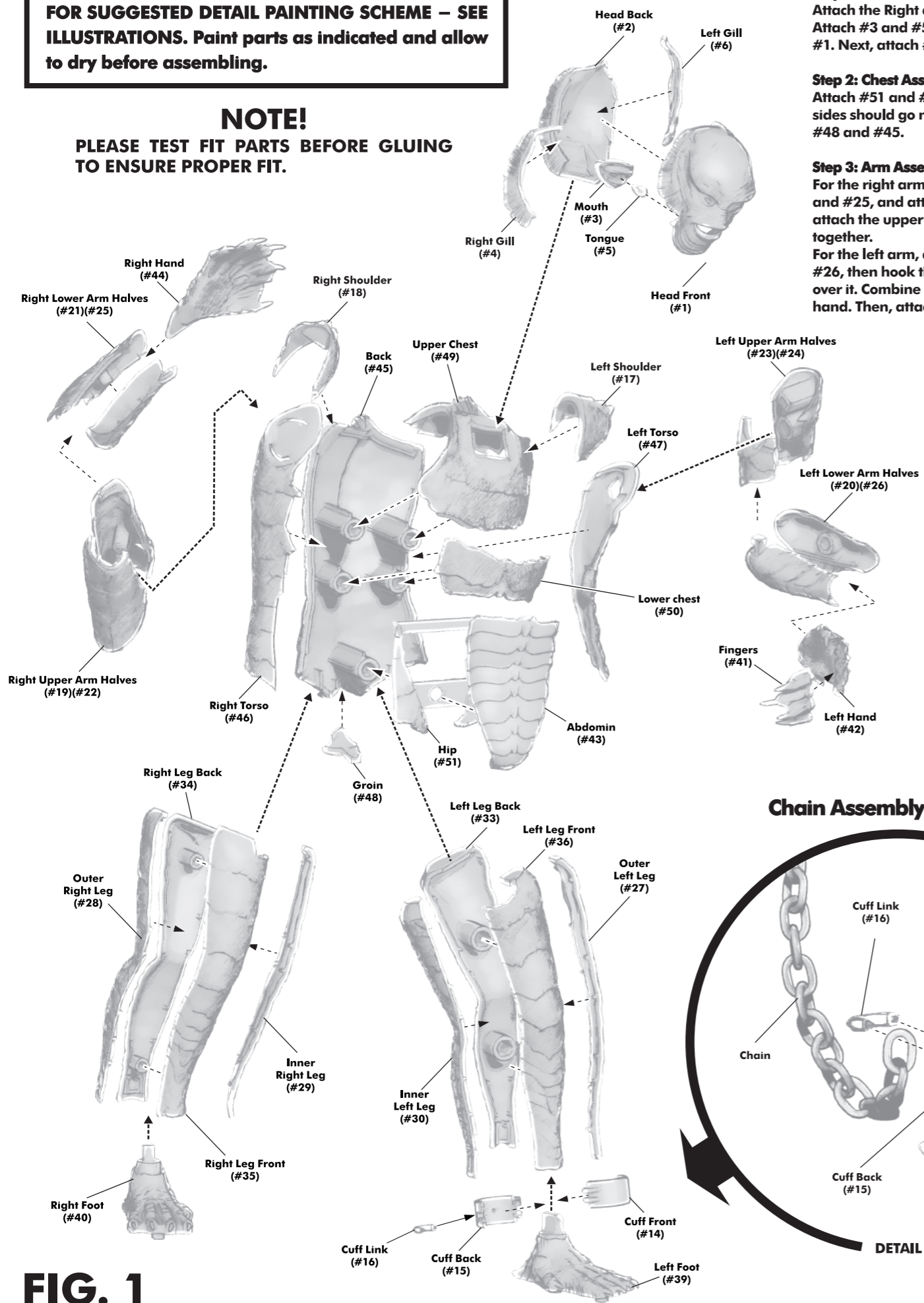


Box art by: Tyler Jacobson  
3D sculpt by: Adam Dougherty  
© Universal City Studios LLC. All Rights Reserved.

**FOR SUGGESTED DETAIL PAINTING SCHEME – SEE ILLUSTRATIONS. Paint parts as indicated and allow to dry before assembling.**

**NOTE!**

**PLEASE TEST FIT PARTS BEFORE GLUING TO ENSURE PROPER FIT.**



**FIG. 1**

**Step 1: Head Assembly**  
Attach the Right and Left Gills, #4 and #6 to #2. Attach #3 and #5, and then attach them to the back of #1. Next, attach #1 and #2 together.

**Step 2: Chest Assembly**  
Attach #51 and #43, then attach to #45. #46 and #47 sides should go next. Then #50 and #49. Later attach #48 and #45.

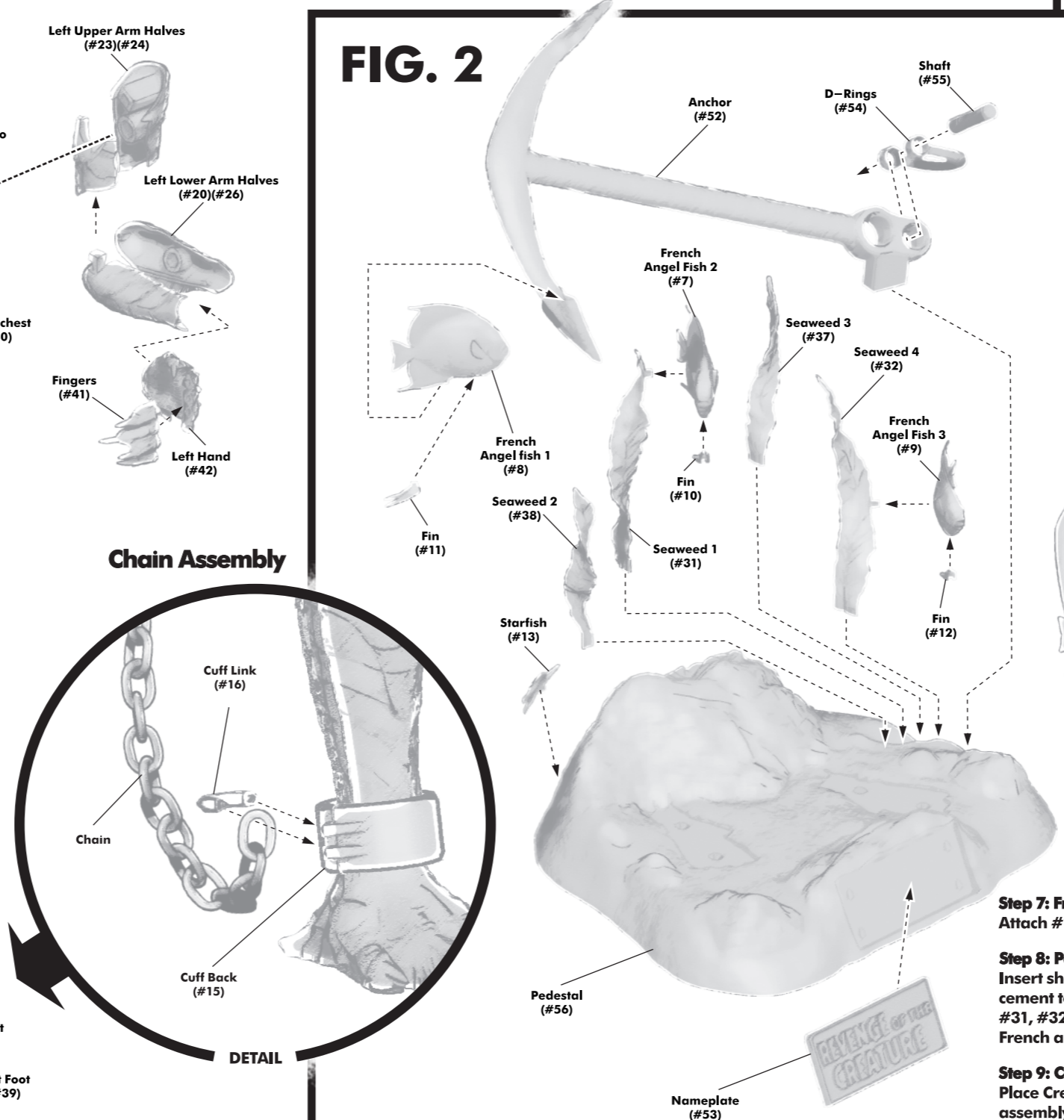
**Step 3: Arm Assembly**  
For the right arm, clamp right hand #44 between #21 and #25, and attach them. Attach #19 to #21, then attach the upper arm and lower arm assemblies together. For the left arm, assemble lower arm first, #20 and #26, then hook the upper arm pieces #23 and #24 over it. Combine #42 and #41 to complete the left hand. Then, attach it to the lower left arm.

**Step 4: Leg Assembly**  
For the right leg, attach #34 to #35. Attach #28 on the outer side and #29 on the inner side. Next, attach right foot #40. For the left leg, attach #33 to #36. Attach #27 on the outer side and #30 on the inner side. Next, attach left foot #39.

**Step 5: Body Assembly**  
Attach the previously assembled chest from Step 2 to the right shoulder #18 and the left shoulder #17. Then, attach the left and right arms. Next, attach the left and right legs, and the head last.

**Step 6: Chain Assembly**  
Pass #16 through one end of the chain and attach it to back of cuff part #15. Then clamp #15 and #14 around the left ankle of the Creature.

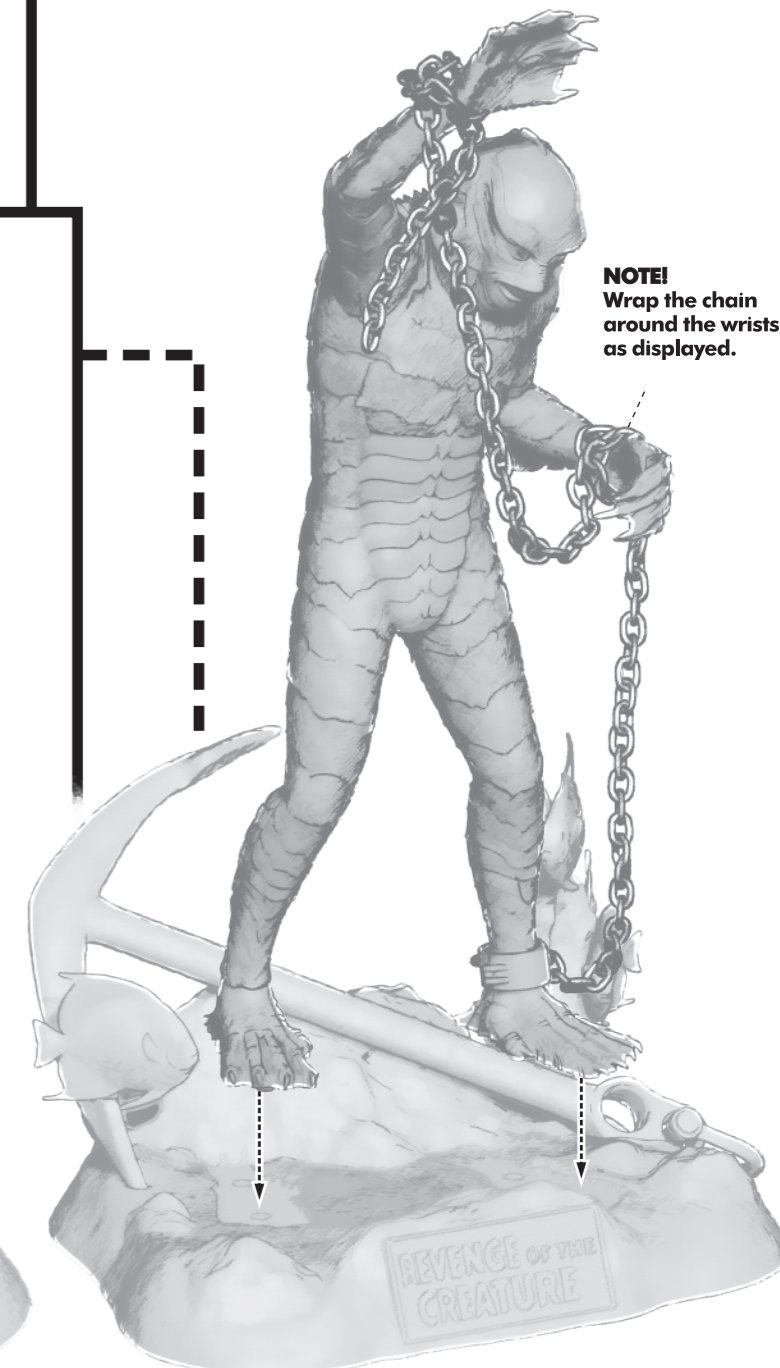
**FIG. 2**



**Chain Assembly**

**DETAIL**

**REVENGE OF THE CREATURE**  
PLASTIC MODEL KIT



**NOTE!**  
Wrap the chain around the wrists as displayed.

**Step 7: French Angelfish Assembly**  
Attach #10 to #7. Attach #11 to #8. Attach #12 to #9.

**Step 8: Pedestal Assembly**  
Insert shaft #55 through the D-ring #54 and the rear of the anchor #52 and use cement to fasten the ring. Place the assembled anchor, the starfish #13, seaweeds #31, #32, #37, and #38 on the pedestal #56 accordingly. Then, attach the assembled French angelfish from Step 7, one on the anchor and two on the seaweeds as shown.

**Step 9: Completion**  
Place Creature and the anchor on the pedestal, and attach the nameplate #53. The assembly is now complete!

**Nameplate (#53)**

**Pedestal (#56)**

1/8 SCALE MODEL

# REVENGE OF THE CREATURE

PLASTIC MODEL KIT

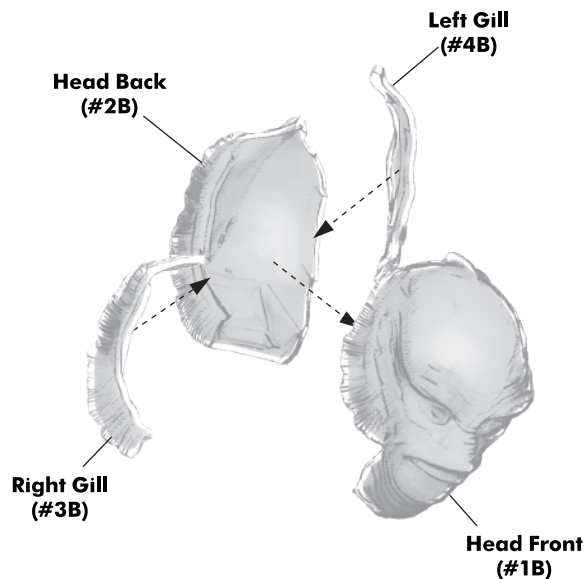
X-PLUS  
MODEL KIT

## Exclusive Edition Parts

**NOTE THAT IT IS NECESSARY FOR THIS STEP NOT TO GLUE THE HEAD TO THE BODY TO BE ABLE TO SWAP THE TWO HEADS.**

### Step 1: Alternate Head Assembly

Attach Right and Left Gills, #3B and #4B to #2B from the sides. Then place #1B on #2B, and the head is finished.



**FIG.1**

**FIG.2**



### Step 2: Final Assembly

Simply position the head on the assembled body and your model with the closed mouth is complete.

SHONEN-RIC EXCLUSIVE